

# LED Bay Lighting

## SEGA Series (SE80)



### Product Description

- Excellent heat dissipation and high efficiency
- Best fitted lighting for factories and warehouses
- Wireless control system capable of on-off and dimming control
- Wireless control system capable of daylight sensor control

### Application

- Factories
- Gyms
- Warehouse
- Superstores

### Certification



General Specifications	
Model Name	SE80
Size	Pipe type Ø12.4 x 20.7 (inch) / Ø315 x 527 (mm)
	Chain type Ø12.4 x 26.8 (inch) / Ø315 x 681 (mm)
Weight (Driver included)	9.4lb / 4.3kg
IP Rating	IP65
Operating Temperature	-20°C ~ 40°C
Warranty	5 Years (12 hours usage per day)
Fixture Manufacturer	GigaTera Lighting Inc. (Made in Korea)

Electrical Performance	
Input Voltage	100 ~ 277Vac / 100 ~ 240Vac / 347 ~ 480Vac
Input Current	Max. 1.25A (@100Vac)
	Max. 0.4A (@347Vac)
Power Factor	≥0.9 at Max load
Frequency	50 / 60 Hz
Surge Protection	Line – Line 4kV / Line – FG 6kV

Materials	
Body	Cast Aluminum
Optic	Al Coating Reflector
Cover	Tempered Glass 3.2T (Clear / Frosted)
Finish	Powder Coating

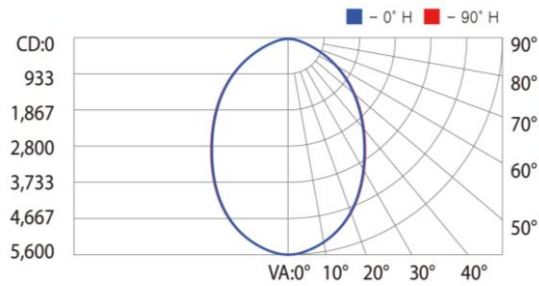
Option	
Control	Wireless (ZigBee)

Lumen Data (Clear)				
CCT	5700K	5000K	4000K	3000K
CRI	70 Ra			
Luminous Flux *	11,600 lm	12,000 lm	11,600 lm	10,800 lm
Luminous Efficacy *	145 lm/W	150 lm/W	145 lm/W	135 lm/W

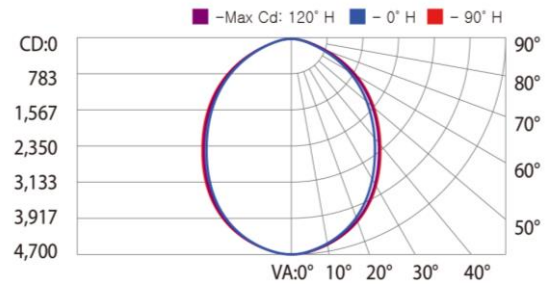
Lumen Data (Frosted)				
CCT	5700K	5000K	4000K	3000K
CRI	70 Ra			
Luminous Flux *	10,800 lm	11,200 lm	10,800 lm	10,000 lm
Luminous Efficacy *	135 lm/W	140 lm/W	135 lm/W	125 lm/W

\*Tolerance ±5%

### Photometry Data – 5000K / Frosted

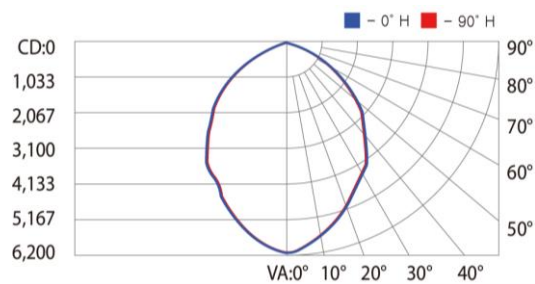


< Asymmetric Wide 80° >

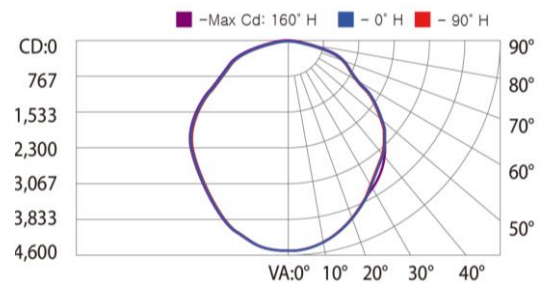


< Asymmetric Wide 110° >

### Photometry Data – 5000K / Clear



< Asymmetric Wide 80° >

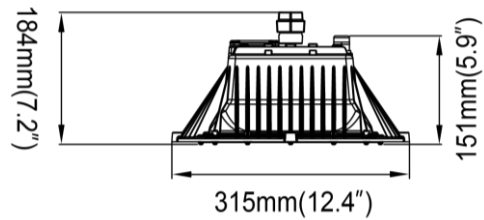
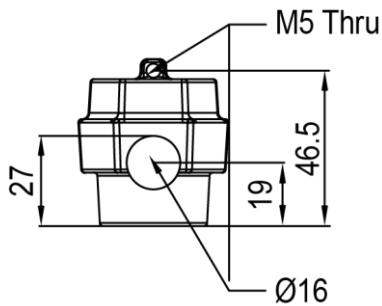


< Asymmetric Wide 110° >

### Types of mounting brackets with dimension information (Optional Purchase)

#### Built-in type / Pipe type

- Bracket Code : KLMCL80G00380\_A2



- GigaTera does not sell or supply the pip

Size		18.9 x 28.6 (inch) / 480 x 726 (mm)
Weight	Module	9.4lb / 4.3kg
	Bracket	0.11lb / 0.05kg
	Assembly (Module + Bracket)	10.5lb / 4.8kg

# LED Bay Lighting

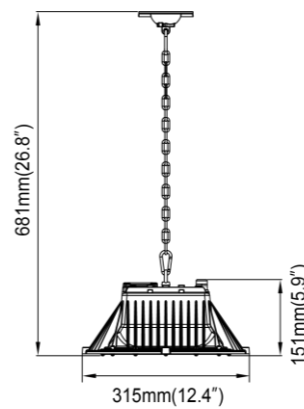
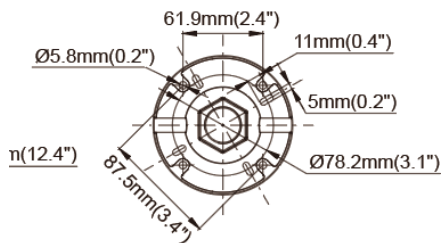
SEGA Series (SE80)

GigaTera<sup>®</sup>  
beyond light

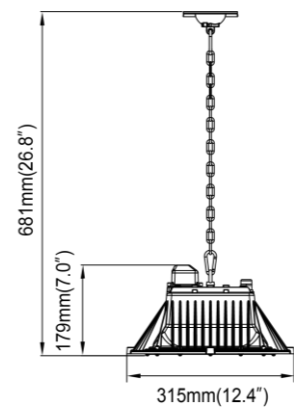
## Types of mounting brackets with dimension information (Optional Purchase)

### Built-in type / Pipe type

- Bracket Code : KLMCL80G00380\_A2



None type (Chain)



Node type (Chain)

	<b>Size</b>	18.9 x 28.6 (inch) / 480 x 726 (mm)
<b>Weight</b>	Module	9.4lb / 4.3kg
	Bracket	0.33lb / 0.15kg
	Assembly (Module + Bracket)	9.8lb / 4.45kg

# LED Bay Lighting

SEGA Series (SE80)

## Control System (Optional)

Wireless Control	ZigBee
Input Voltage	15Vdc
Max. Power Consumption	0.3W (@15Vdc)
Standard	2.4 GHz – IEEE 802.15.4 (Compatible)
Network	Mesh
RF Tx Power	Max. +8dBm (Typ. 5dBm)
Data Rate	250 kbps
Security	128 bit AES Encryption Algorithms
Antenna	Omni Type, 2dBi

### 0-10V

**Factory Installed** The maximum quantity at the time of group control is according to dimmer switch and actuator supply wattage.

## Ordering Information

### Ordering Code Usage : SE80-A5009CNNW1

SE	○○○	○	○○	○○○	○	○	○
	Power Consumption	Input Voltage	CCT (K)	Beam Angle (A = Asymmetric) (S = Symmetry)	Installation Type	Control System	Fixture Color
	080	A = 100 ~ 277V B = 100 ~ 240V	57 = 5700K 50 = 5000K 40 = 4000K 30 = 3000K	08 = 80° 10 = 100° 11 = 110°	CN = Chain PE = Pipe	N = None Z = ZigBee	W1 = White Ceramic