

LED Flood Lighting

SUFA-X Series

GigaTera®
beyond light

SFX600 / SFX500 / SFX200

Product Description

- Best Technology to get high efficacy and less glare optic performance
- Glare free from Narrow beam reflector
- Flicker free proven upto 1,500 fps ultra slow-motion
- High CRI & R9 Content better visibility
- Linkage with wired and wireless control system even for event light control



Application

- Sports Stadium
- Indoor Venues
- Port

Certification

- UL / FCC
- DLC
- PSE
- KC

SUFA-X Series Specifications

Model Name	SFX600									SFX500								
Power Consumption	600W									500W								
CCT	5700K			5000K			4000K			5700K			5000K			4000K		
Luminous Flux * (lm)	63,000	72,000	78,000	66,000	75,000	81,000	63,000	72,000	78,000	52,500	60,000	65,000	55,000	62,500	67,500	52,500	60,000	65,000
Luminous Efficacy * (lm/W)	105	120	130	110	125	135	105	120	130	105	120	130	110	125	135	105	120	130
CRI	90 Ra	80 Ra	70 Ra	90 Ra	80 Ra	70 Ra	90 Ra	80 Ra	70 Ra	90 Ra	80 Ra	70 Ra	90 Ra	80 Ra	70 Ra	90 Ra	80 Ra	70 Ra
LED Driving Current	923 mA									769 mA								
Light Distribution	15° / 30° / Asymmetric Wide																	
Input Voltage	200 ~ 277 Vac / 220 ~ 240 Vac / 347 ~ 480 Vac																	
Input Current	Max. 3.5A (@200 Vac)									Max. 3.0A (@200 Vac)								
	Max. 2.2A (@347 Vac)									Max. 1.9A (@347 Vac)								
Power Factor	≥0.9 at Max load																	
Inrush Current	40A																	
Frequency	50 / 60 Hz																	
Surge Protection	Line – Line 20kV, Line – FG 20kV																	
Driver Type	Constant Current (CC)																	
Fixture Manufacturer	GigaTera Lighting Inc. / Made in Korea																	
Size	inch	12.7 x 15.5 x 16.1																
	mm	323 x 393 x 409																
Weight (Driver include)	36.6 lb / 16.6 kg																	
Material	Body	Cast Aluminum																
	Optic	AL Coating Reflector																
	Cover	Tempered Glass 3.2T (Clear)																
Finish	Powder Coating																	
IP Rating	IP66																	
Effective Projected Area	Front (ft² / m²)	1.226 / 0.113																
	Side (ft² / m²)	1.056 / 0.098																
Operating Temperature	-30°C ~ 50°C																	
Option	Control	Wireless (ZigBee) / Wired (RS-485, DMX-512)																
	Mounting	-																
	Cover Protection	Stainless steel wire mesh for glass protection																
Warranty	5 Years (12 hours usage per day)																	

* Tolerance : ± 10%

LED Flood Lighting

SUFA-X Series

GigaTera[®]
beyond light

SFX600 / SFX500 / SFX200

SUFA-X Series Specifications									
Model Name	SFX200								
Power Consumption	200W								
CCT	5700K			5000K			4000K		
Luminous Flux * (lm)	21,000	24,000	26,000	22,000	25,000	27,000	21,000	24,000	26,000
Luminous Efficacy * (lm/W)	105	120	130	110	125	135	105	120	130
CRI	90Ra	80Ra	70Ra	90Ra	80Ra	70Ra	90Ra	80Ra	70Ra
LED Driving Current	1000 mA								
Light Distribution	15° / 30° / Asymmetric Wide								
Input Voltage	100 ~ 277 Vac / 347 ~ 480 Vac								
Input Current	Max. 2.5A (@100Vac)								
	Max. 0.75A (@347Vac)								
Power Factor	≥0.9 at Max load								
Inrush Current	40A								
Frequency	50 / 60 Hz								
Surge Protection	Line – Line 20kV, Line – FG 20kV								
Driver Type	Constant Current (CC)								
Fixture Manufacturer	GigaTera Lighting Inc. / Made in Korea								
Size	inch	8.1 x 15.1 x 8.6							
	mm	208 x 386 x 220							
Weight (Driver include)	16.5 lb / 7.5 kg								
Material	Body	Cast Aluminum							
	Optic	AL Coating Reflector							
	Cover	Tempered Glass 3.2T (Clear)							
Finish	Powder Coating								
IP Rating	IP66								
Effective Projected Area	Front (ft² / m²)	0.930 / 0.086							
	Side (ft² / m²)	0.632 / 0.058							
Operating Temperature	-30°C ~ 50°C								
Option	Control	Wireless (ZigBee) / Wired (RS-485, DMX-512)							
	Mounting	-							
	Cover Protection	Stainless steel wire mesh for glass protection							
Warranty	5 Years (12 hours usage per day)								

* Tolerance : ± 10%

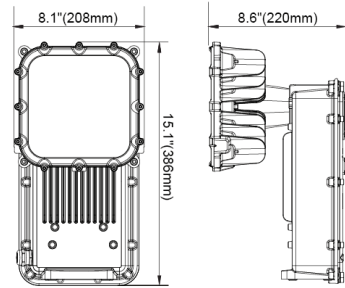
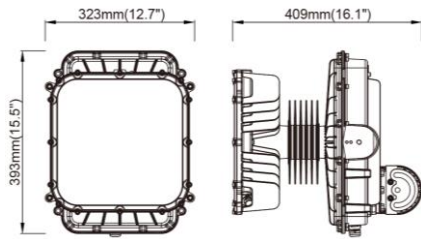
SUFA-X 600W / 500W

SUFA-X 200W

LED Flood Lighting SUFA-X Series

GigaTera[®]
beyond light

SFX600 / SFX500 / SFX200



Size

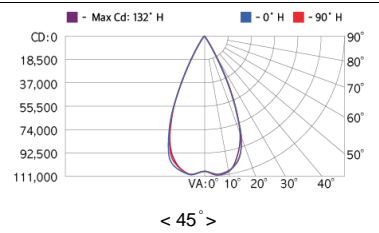
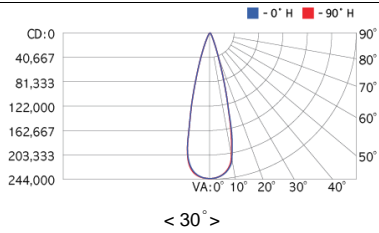
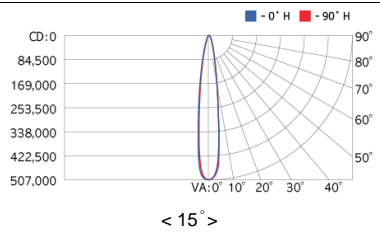
12.7 x 15.5 x 16.1 (inch)
323 x 393 x 409 (mm)

Size

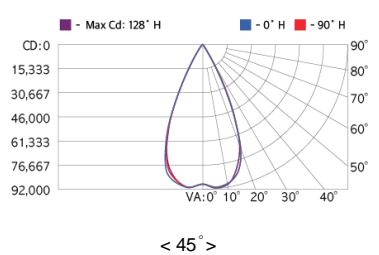
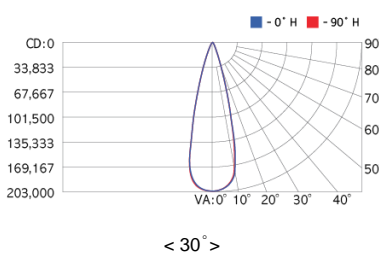
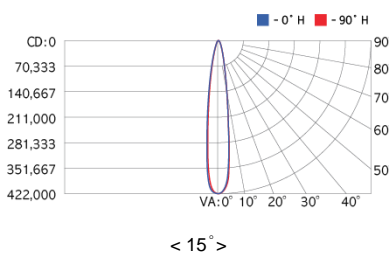
8.1 x 15.1 x 8.6 (inch)
208 x 386 x 220 (mm)

Photometry Data

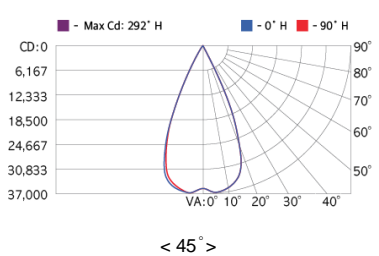
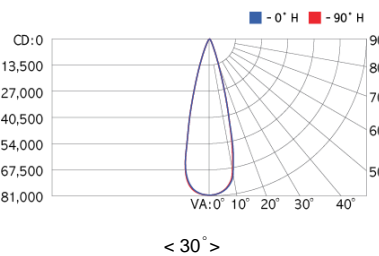
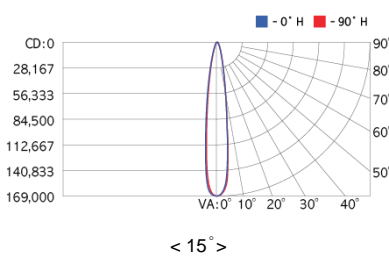
SFX600 / 5000K / 80Ra



SFX500 / 5000K / 80Ra



SFX200 / 5000K / 80Ra



Control System (Optional)

LED Flood Lighting

SUFA-X Series



SFX600 / SFX500 / SFX200

ZigBee		Wireless Control	
Input Voltage	15 Vdc		
Max. Power Consumption	0.3W (@15 Vdc)		
Standard	2.4 GHz – IEEE 802.15.4 (Compatible)		
Network	Mesh		
RF Tx Power	Max. +8 dBm (Typ. 5 dBm)		
Data Rate	250 kbps		
Security	128 bit AES Encryption Algorithms		
Antenna	Omni Type, 2 dBi		
Wired Control		RS-485	DMX-512
Input Voltage	15 Vdc		
Max. Power Consumption	0.2W (@15 Vdc)		
Communication Method	RS-485	DMX-512	
Data Rate	115,200 bps, 8-N-1	250,000 bps, 8-N-2	

LED Flood Lighting

SUFA-X Series

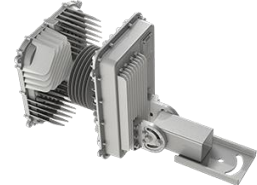
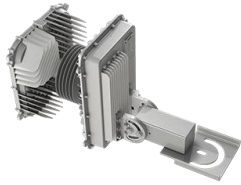
SFX600 / SFX500 / SFX200

Mount Bracket Installation Reference (Optional)

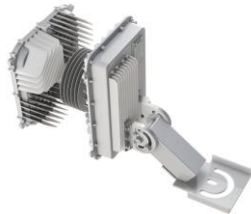
SFX600 / SFX500

KETBKTLC13G1007

KMDLMBK010430



KETBKTLC13G1009



SFX200

KETBKTLC13G1001

KETBKTLC13G1006

Swivel Bracket (Up:90° / Down: 90°)

Surface Mount Bracket



Ordering Information

Ordering Code Usage : SFX600-H500458N

SFX	○○○	-	○	○○	○○○	○	○
	Power Consumption		Input Voltage	CCT (K)	Beam Angle	CRI	Control System
	600 = 600W 500 = 500W 200 = 200W		A = 100 ~ 277V C = 347 ~ 480V D = 220 ~ 240V H = 200 ~ 277V	57 = 5700K 50 = 5000K 40 = 4000K 30 = 3000K	045 = 45° 030 = 30° 015 = 15°	8 = 80 Ra 7 = 70 Ra	Z = Wireless (ZigBee) W = Wired (RS-485) M = Wired (DMX-512) N = None